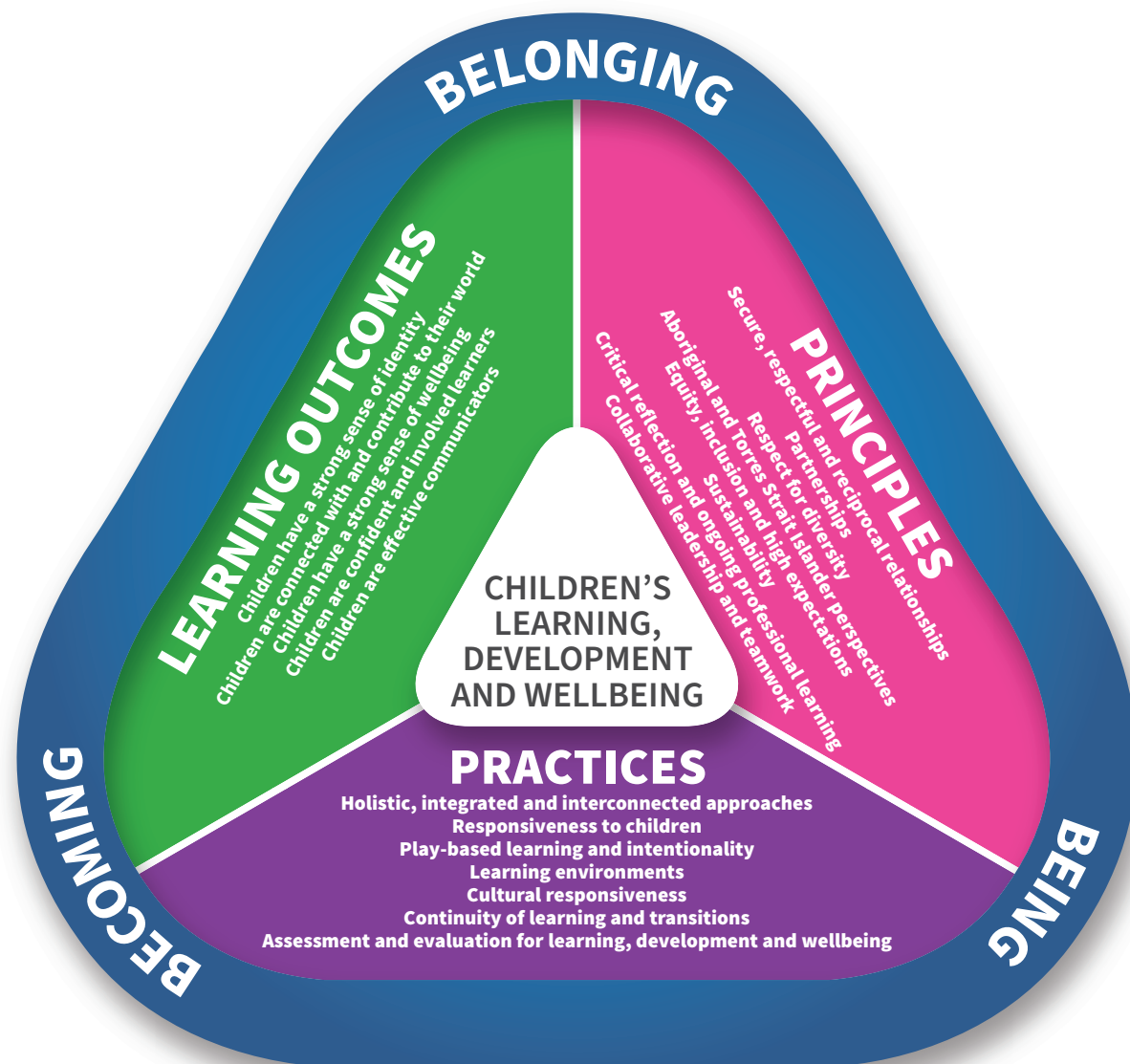


# ELEMENTS OF THE EARLY YEARS LEARNING FRAMEWORK

This diagram shows the integrated connections of the Vision, Principles, Practices and Learning Outcomes that centre on children’s learning, development and wellbeing. Belonging, Being and Becoming overlap all these elements.



VISION		
BELONGING, BEING AND BECOMING		
PRINCIPLES	PRACTICES	LEARNING OUTCOMES
<ul style="list-style-type: none"> <li>Secure, respectful and reciprocal relationships</li> <li>Partnerships</li> <li>Respect for diversity</li> <li>Aboriginal and Torres Strait Islander perspectives</li> <li>Equity, inclusion and high expectations</li> <li>Sustainability</li> <li>Critical reflection and ongoing professional learning</li> <li>Collaborative leadership and teamwork</li> </ul>	<ul style="list-style-type: none"> <li>Holistic, integrated and interconnected approaches</li> <li>Responsiveness to children</li> <li>Play-based learning and intentionality</li> <li>Learning environments</li> <li>Cultural responsiveness</li> <li>Continuity of learning and transitions</li> <li>Assessment and evaluation for learning, development and wellbeing</li> </ul>	<ul style="list-style-type: none"> <li>Children have a strong sense of identity</li> <li>Children are connected with and contribute to their world</li> <li>Children have a strong sense of wellbeing</li> <li>Children are confident and involved learners</li> <li>Children are effective communicators</li> </ul>